

2021

Annual Report



Contents

- 01 Leadership Letter
 - 02 Goal 1
 - 04 Goal 2
 - 06 Goal 3
 - 08 Fiscal Year 2021 Highlights
 - 09 Supporters
 - 16 Board of Directors
 - 17 Mass Audubon Wildlife Sanctuaries, Nature Centers, and Museums
-

Mass Audubon is the largest nature-based conservation organization in New England. Founded in 1896 by two women who fought for the protection of birds, Mass Audubon carries on their legacy by focusing on the greatest challenges facing the environment today: the loss of biodiversity, inequitable access to nature, and climate change.

With the help of our 140,000 members and supporters, we protect wildlife, conserve and restore resilient land, advocate for impactful environmental policies, offer nationally recognized education programs for adults and children, and provide endless opportunities to experience the outdoors at our wildlife sanctuaries. Explore, find inspiration, and take action at massaudubon.org.

We are committed to being as transparent, ethical, and efficient as possible with the funds that are entrusted to us. A complete copy of the audited financial statements is available upon request from the Mass Audubon Vice President for Operations, Bancroft Poor. Members and others should feel free to contact him at 781-259-2110 or bpoor@massaudubon.org with any questions about Mass Audubon's finances.



COVER PHOTO:
Common Yellowthroat © Ian Barton



Red Trillium © Ben Mancino

Dear friends and supporters,

Nature is playing an outsized role in society today, as more people get outdoors, celebrate its importance, and awaken to the challenges it faces. We see this every day—Mass Audubon sanctuaries experienced record-breaking visitation as people of all ages found solace in nature during the pandemic, and our membership has grown significantly.

It is clear that protecting the nature of Massachusetts is more important now than ever before. Climate change, the lack of equitable access to nature and open spaces, and the loss of biodiversity are the challenges of our time. In March 2021, Mass Audubon adopted its Action Agenda—a bold, ambitious, and hopeful plan that sets out to address these challenges.

The Agenda's three goals—resilient land, inclusive and equitable access to nature, and climate change—are linked and interdependent. Achieving these goals requires us to draw on the collective talents of our staff and volunteers and work across our sanctuaries, which bring our mission to life and are the engine for the implementation of the Action Agenda. It also requires that we build stronger partnerships and mobilize the influence of our expansive membership, now 140,000 strong.

Since adopting the Action Agenda, we have been busy building the organizational infrastructure to position us for long-term success, while making significant progress on our goals. While much more must be done, we made significant strides in becoming the most inclusive conservation organization we can be, including hiring a vice president of diversity, equity, inclusion, and justice, launching a new urban greenspace, and building the Environmental Fellowship Program.

We also successfully advocated for the passage of the nation's strongest policy to combat climate change and pushed for investments in nature-based climate solutions. The Roadmap for Massachusetts Climate Policy commits the state to meet net-zero emissions in 2050 and furthers the Commonwealth's efforts to combat climate change and protect vulnerable communities. And in December, state legislative leaders agreed on the American Rescue Plan Act (ARPA) spending bill, which included \$377 million for nature and climate.

While international and national leaders struggle to find a path forward on climate change policy, it is critical that Massachusetts lead and provide a roadmap not only for the Commonwealth, but for the nation and the world.

We are moved every day by the passion and devotion of our supporters, volunteers, and members, and we are inspired by the beauty and wonder that nature brings to our lives. We enter 2022 with a deep sense of urgency, but also with hope and optimism that comes from the joy we see when people of all ages and backgrounds experience our sanctuaries.

Thank you for joining us in shaping a brighter future for the nature of Massachusetts and in this next exciting chapter at Mass Audubon.



Beth Kressley Goldstein
Chair, Board of Directors



David J. O'Neill
President





Protect and Steward Resilient Landscapes

Mass Audubon will dramatically expand our efforts to restore and steward the state’s most important natural lands, including forestlands, coastal watersheds, and river corridors where our work can deliver maximum ecological benefit.

See how we’re already putting this goal into action, and what comes next.

GOAL 1

Lead a public/private sector coalition to protect

30%

of Massachusetts by 2026 by conserving an additional 150,000 acres

Of that total, Mass Audubon will directly protect

10,000

acres of new natural lands and sanctuaries—a fourfold increase in the pace of our land protection efforts

Enhance the management of

200,000

acres of public and private forestlands

Restore, protect, and manage at least

2,500

acres of critical coastal ecosystems

Bear Hole Landscape | West Springfield

West Springfield’s Bear Hole is a beautiful open space of 1,400 acres located within five miles of three cities—Springfield, Holyoke, and Westfield.



This massive landscape was permanently protected thanks to a partnership between West Springfield, Mass Audubon, and the Massachusetts Department of Conservation and Recreation (DCR). On June 29, a permanent Conservation Restriction (CR), to be jointly held by Mass Audubon and DCR, was purchased for \$1 million. While the CR will ensure that the property is well managed and will never be developed, West Springfield will continue to own and manage the land.

The diversity of this landscape, combined with its connection to a large swath of already protected, connected land, will provide powerful benefits to plants and animals residing within Bear Hole—boosting their resilience to the impacts of climate change in the years ahead. The list of benefits to people is long as well: enhancing our physical and mental health with its welcoming trails, storing floodwaters and massive amounts of carbon, and providing needed cooling to nearby urban areas.

massaudubon.org/bearhole



Bear Hole

Coastal Resilience Program

Our coastal ecosystems inspire us, draw us in, and provide endless forms of recreation. They also store carbon, buffer communities from the effects of climate change, and provide habitat for fish, shellfish, a wide variety of birds, and other species. And yet coastal ecosystems and species have long been subject to development pressures and are now on the front lines of climate change.

Mass Audubon experiences these threats firsthand at our 36 Coastal Wildlife Sanctuaries that cover nearly 4,200 acres of land, as well as along the 140 miles of coastline we steward as part of our Coastal Waterbirds Program. Protecting and stewarding coastal ecosystems has been a hallmark of our work for generations, but this year we created the Coastal Resilience Program to sharpen our focus and to organize a cross-departmental team of scientists, policy leaders, educators, and biologists to tackle the range of issues necessary to protect them.

Led by Dr. Danielle Perry, the Coastal Resilience Program is focused on restoring and managing salt marsh and beach habitat to buffer coastal storms while improving habitat for the vulnerable Saltmarsh Sparrow and federally threatened Piping Plover. We will continue to partner with federal, state, and local agencies on restoring cranberry bogs and other coastal wetlands to absorb stormwater and restore passage for river herring and American eel. And we are educating our members and volunteers to advocate for policy and regulatory reforms that are necessary to expand the restoration and protection of these ecosystems.

massaudubon.org/crp

Protecting the Last Farm in Lowell

When the Perron family decided it was time to sell their 20-acre Christmas tree farm—the last farm in Lowell and one of the last remaining large parcels in this urban city—they hoped it might be possible to benefit the community in a meaningful way.

That desire sparked conversations with Rollie Perron and his family, and with Mass Audubon, the Lowell Parks & Conservation Trust, and Mill City Grows (a local urban farming organization), in collaboration with the City of Lowell. Just a few months ago, an agreement was codified to preserve Rollie's Farm in perpetuity.

The shared vision for the property includes creating an urban nature sanctuary dedicated to community-based environmental education and local agriculture. A portion of the property will undergo an ecological restoration, with woodland trails for recreation, a scenic overlook, a nature playscape for children, and a viable connection to the nearby 1,200-acre Lowell-Dracut-Tyngsborough State Forest. Its protection is a prime example of a nature-based climate solution—the restoration will boost the property's function as a carbon sink, absorbing carbon dioxide from the atmosphere.

Among the partners, we will need to raise \$4.3 million by December 2023 to purchase the property. We hope that a significant portion of this funding can come from Lowell Community Preservation Act funds and funding from the American Rescue Plan Act (ARPA). Stay tuned for details and how you can get involved.



Rough Meadows © Paul Mozell



Rollie's Farm



Advance Inclusive and Equitable Access to Nature

GOAL 2

Protect

20

new urban green spaces and wildlife sanctuaries by 2026

Grow the number of people from low-income families and communities of color who participate in our nature-based educational programs from 35,000 to

90,000

Double the total number of people who benefit from our educational, preschool, and camp programs from 150,000 to

300,000

Increase low-income families' access to our programs by growing our scholarship fund to

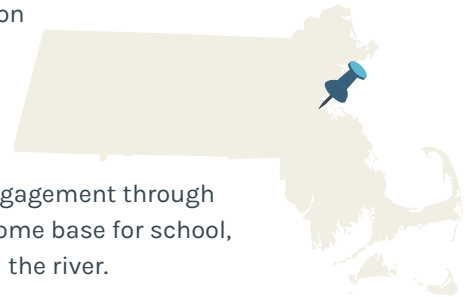
\$2 million

Mass Audubon is committed to promoting inclusive and equitable access to nature by creating new sanctuaries in urban environments, expanding and deepening our environmental and career programs, and working with community partners. As we strive to protect the nature of Massachusetts and do so with an eye toward greater equity, we will create more parks, trails, and open spaces in our most vulnerable communities to address the impacts of climate change, enhance wildlife, and improve human health.

See how we're already putting this goal into action, and what comes next.

New Urban Green Space | Magazine Beach, Cambridge

The Massachusetts Department of Conservation and Recreation (DCR) awarded Mass Audubon a five-year license to the Powder Magazine facility located on the banks of the Charles River in Cambridge. This urban green space partnership is focused on deep community engagement through both a drop-in seasonal nature center and a home base for school, family, and adult programming on and around the river.



Activities began in July through the DCR Summer Nights program, which funded 15 evenings of habitat explorations, wildlife demonstrations, and nature art at Magazine Beach as well as additional locations in Brockton and Stoughton for teen audiences. Programming continued through the fall with a series of Nature in the City events to explore the outdoors with Mass Audubon educators and community partners.

We are excited to get to know the Cambridge community more deeply when we open for our full schedule of programming in April 2022, building on our existing relationships with Magazine Beach Partners community association and existing programming with nearby schools.

massaudubon.org/magazinebeach



Kayaking on the Charles River



Environmental Fellowship Program

Mass Audubon is committed to creating a more diverse, equitable, inclusive, and just organization and to providing greater access to nature for everyone. Part of this work requires us to address the historical inequities within the environmental and conservation fields.

In 2022, Mass Audubon will launch our Environmental Fellowship Program, designed to increase early career opportunities for young professionals with identities that have been historically underrepresented in the environmental fields.

Fellows will be offered a one-year position within our organization that aligns with a professional area of interest, such as conservation science, climate change, environmental management, environmental education, communications, or advocacy. More than just furnishing a job, the Environmental Fellowship Program will provide opportunities for networking, mentoring, and skill development within a supportive cohort model, while the organization benefits from the innovative perspectives of these young professionals.

Meeting the Needs of All

Everybody deserves the health benefits of spending time in nature, and we welcome everyone to join our conservation community. In our ongoing work to be inclusive for all individuals, including those with physical, sensory, or intellectual disabilities, we offer several accessible educational programs and experiences.

This school year, 50 Vocational-Transitional Interns, teens, and young adults ages 16–22 with intellectual and emotional disabilities are caring for live animals, maintaining bird feeding stations, helping with ecological management, and engaging with visitors at six of our wildlife sanctuaries. We launched Sensory Friendly Days, when individuals on the autism spectrum or with other sensory-sensitive needs can visit when properties are closed to the general public or tend to be relatively quiet.

In addition, we began construction on our 15th universally accessible All Persons Trail and have several more in the planning stages. And we have ramped up our online programs as well as our adaptive nature programs in assisted living and other residential settings where individuals do not have access to nature.

massaudubon.org/accessibility





Mobilize to Fight Climate Change

We are focused on the actions we must take in response to the climate crisis. These include pushing for swift implementation of the state’s ambitious emission reduction goals, empowering people to become climate and conservation champions, and advancing policies that reduce the impacts of climate change for our most vulnerable communities.

See how we’re already putting these goals into action, and what comes next.

GOAL 3

Achieve full implementation of the state’s carbon emissions goals for

2030
and
2050

Mobilize our

140,000
members to advance policies and funding for nature-based climate solutions

Train more than

1,000
adults, college students, and youth to become champions for climate and conservation policy

Advance policies that reverse the negative health impacts of climate change for low-income residents and communities of color

Youth Climate Leadership Program

From the Berkshires to the Islands, the youth of Massachusetts are actively engaging on climate change issues through the Youth Climate Leadership Program (YCLP). By organizing Youth Climate Summits and climate cafés and taking action in their own communities, these youth are a driving force of change at the local level and beyond.

In the western part of the state, teams that attended the 2020 Youth Climate Summit implemented a host of Climate Action Projects, held a Solutions Showcase, and organized a 2021 summit. Near Boston, youth planned an invasive plant removal effort and are working on a Climate Summit slated for January 2022. Out on the Islands, teens held a spring summit and led a walkout at Nantucket High School to raise climate awareness. And Cape Cod youth were instrumental in passing a plastic bottle ban.

In addition, a select group of youth leaders created a toolkit for new YCLP teams to help with recruiting and event planning and, with our partners such as the Hitchcock Center for the Environment, held the first ever Youth Climate Leadership retreat at Mass Audubon’s Wildwood Camp in Rindge, New Hampshire, and online.

massaudubon.org/yclp



Advocating for Responsible Offshore Wind

For Massachusetts and New England, offshore wind offers the most promising opportunity to bring clean, renewable energy to scale. With dense populations located near the coast and abundant wind resources located over a shallow continental shelf, this resource can provide a large portion of our energy needs.

An important milestone was reached this year with the approval of the first utility-scale offshore wind project in the U.S. Construction is underway on Vineyard Wind, which will supply 800 megawatts of clean, renewable energy—enough to power 400,000 homes. Mass Audubon successfully advocated for additional protections for birds—including the Roseate Tern, Red Knot, and Piping Plover—through the environmental review process. Several additional projects are also moving through the planning and permitting processes. We continue to support measures to avoid, minimize, and mitigate impacts to birds and other wildlife.

massaudubon.org/wind

Directing \$1 Billion for Nature and Climate

From forest reserves that absorb and store carbon to spongelike wetlands that protect our communities from flooding, we know that nature's power to tackle the climate crisis, clean water and the air, and protect biodiversity is immense. COVID-19 lockdowns reinforced just how essential nature and access to nature is for human health, both physical and mental. With several government infrastructure and economic recovery funding packages rolling out over the coming months, the time has never been better to harness the collective power of Mass Audubon and our partners to steer federal, state, private, and philanthropic dollars to supporting nature.

To this end, Mass Audubon has launched \$1 Billion for Nature and Climate—an advocacy effort to drive major new funding toward investments in nature, wildlife, the climate system, and people. In 2021, we made great progress toward our goal by working with our partners to successfully advocate on Beacon Hill for \$377 million of the American Rescue Plan Act funds to be directed to nature and climate priorities. In 2022, we'll continue to engage our 140,000 members to fight for new public and private funding to protect and restore lands in critical places; build resilience; increase access to parks, trail systems, and open space; and strengthen our water infrastructure. We hope you'll join us.

massaudubon.org/investinnature



Roseate Tern



Monarch

Fiscal Year 2021 Highlights

Mass Audubon remains a very strong and financially stable organization, despite a number of economic challenges brought on by the pandemic. The generosity of our donors is outstanding and helped us tremendously in weathering what could have been a devastating setback.

Fiscal year 2021 was a year of recovery and renewed growth for Mass Audubon, following a difficult end to FY 2020. Like many nonprofits, we were forced to make changes to our operating model and rewrite our budget when the pandemic arrived in Massachusetts. While our land acquisition, advocacy, and science work was not curtailed, our educational programs were cut back substantially as the COVID-19 virus continued to spread.

Philanthropic and member support helped us maintain our core operations while also permitting new ventures and investments. For the year, Mass Audubon recorded the highest amounts ever for both gifts and grants to operations and membership dues, exceeding budget expectations.

Visitation to our sanctuaries also set a record. Program or earned income, although lower than in previous years, surpassed budget targets, and we ramped up online programs to supplement our in-person teaching model and increase accessibility.

Investment income was at an all-time high, due to the diligent management of our endowment funds, a positive stock market, and a temporary increase in our spending rate from the endowment.

Overall, Mass Audubon realized a modest budget surplus in FY 2021.

In addition to gifts and grants to operations, donors also contributed \$7.5 million for capital and special projects, land acquisition, and the strategic Action Agenda in FY 2021.

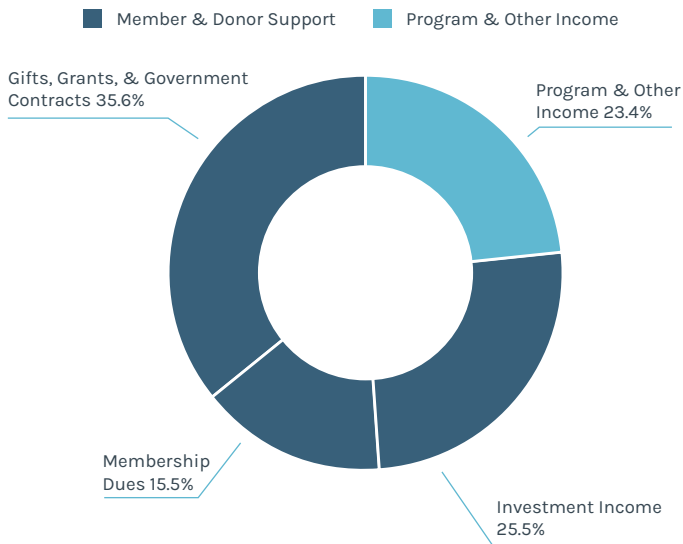
Mass Audubon continues to face financial impacts from the pandemic in FY 2022, particularly as it relates to caution in resuming indoor programs. However, we will continue to respond with innovation, flexibility, and determination, and we are well positioned to embark on our Action Agenda. We appreciate the enthusiastic support of our members, donors, and program partners as we emerge from the pandemic and move forward to expand our impact in multiple dimensions.

OPERATING RESULTS	FY 2021	FY 2020	FY 2019
Gifts, Grants, & Government Contracts	\$9,200,193	\$7,460,004	\$6,613,308
Budgeted Unrestricted Bequests*	500,000	250,000	250,000
Membership Dues	4,210,205	3,570,195	3,811,200
Program Income	6,386,504	9,403,177	11,633,035
Investment Income	6,929,014	6,285,760	5,944,864
Other Income†	-2,570,843	631,498	244,582
Total Operating Income	\$24,655,073	\$27,600,634	\$28,496,989
Environmental Education & Wildlife Sanctuaries	16,370,574	19,653,337	19,165,806
Science & Advocacy	1,717,952	1,531,528	1,871,187
Member Services	1,880,468	2,616,257	2,920,283
Administrative Services	2,455,816	2,777,774	2,530,922
Development	2,229,562	2,075,756	2,007,335
Total Operating Expenses	\$24,654,372	\$28,654,652	\$28,495,533
Operating Surplus/(Deficit)	\$701	(\$1,054,018)	\$1,456

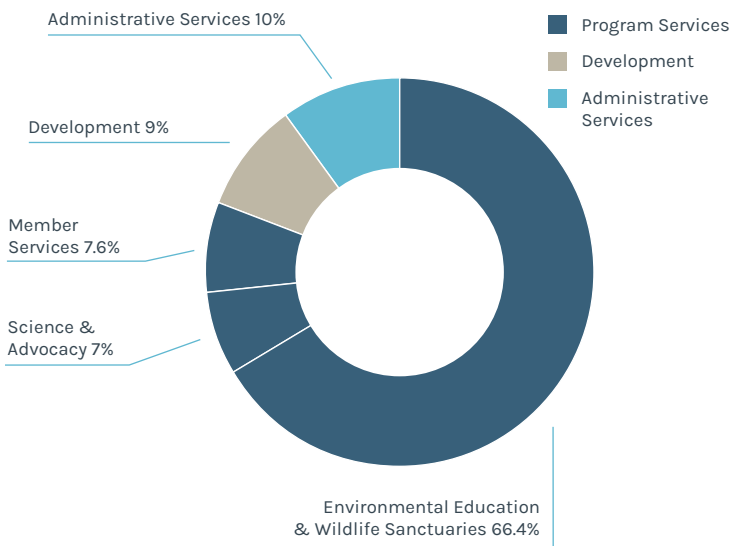
*An additional \$947,466 was received in unrestricted bequests in FY 2021. These critical funds are added to a board reserve fund, which is available for special investments such as land purchases, energy conservation, all-person accessibility, and major building repairs.

†Income for specific programs and capital projects in future years in support of the strategic Action Agenda.

FY 2021 Income



FY 2021 Expenses



SUPPORTERS

Mass Audubon gratefully acknowledges the individuals, foundations, corporations, and government agencies whose generous financial contributions and pledges provided critical support for our conservation, education, and advocacy efforts between July 1, 2020 and June 30, 2021. We are pleased to recognize the leading contributors and express our gratitude to our more than 140,000 members. Please note that this list does not include membership dues, except at the \$750 level.

Symbol Key:

✦ an individual who passed away during Fiscal Year 2021

Every effort was made to accurately reflect each contributor. If you find an error in the list, please accept our sincere apology and contact the Development Office at 781-259-2123.

We wish to thank the following gift funds and foundations that recommended grants to Mass Audubon through donor-advised funds and other giving vehicles during Fiscal Year 2021:

- | | |
|---|--|
| Ayco Charitable Foundation | Essex County Community Foundation |
| Berkshire Taconic Community Foundation | Fidelity Charitable |
| BNY Mellon Charitable Gift Fund | Fleet Charitable Gift Fund |
| The Boston Foundation | Greater Kansas City Community Foundation |
| The Cape Cod Foundation: A Community Foundation | Greater Worcester Community Foundation |
| Charityvest, Inc. | The New York Community Trust |
| Combined Jewish Philanthropies | Pittsburgh Foundation |
| Commonwealth Financial Network | Santa Barbara Foundation |
| Community Foundation of New Jersey | Schwab Charitable Fund |
| Community Foundation of North Central Massachusetts | Vanguard Charitable Endowment Program |
| Community Foundation of Western Massachusetts | |



2021

By the Numbers



125
YEARS

since our courageous founders, Henrietta Hemenway and Minna Hall, started fighting for the protection of birds.

884

CAMPERS

received financial assistance to attend camp, which accounts for 8.4% of all campers in 2021.



Founder's Circle: Platinum \$1,000,000

Anonymous (2)
Beth Kressley Goldstein & Dennis Goldstein
Natasha & Charles Grigg

\$250,000-\$999,999

Anonymous (1)
Susan & Peter Bernard
Kathleen Emrich & Robert Sherwood
Nancy C. Hammond
Roger Klein & Rachel Coben/
Krieger Charitable Trust
Bob & Alison Murchison

\$100,000-\$249,999

Anonymous (3)
Robert P. Ball
George & Marinda Bennett
Paul L. & Susan P. Chern
Tracy Fischer
Pamela Kohlberg & Curt Greer
Justine & Jim Laugharn
Nagesh Mahanthappa & Valentine Talland
Kevin & Kristine McLellan
Michael Pappone & Diane Savitsky
Rosamond Vaule

\$25,000-\$99,999

Anonymous (2)
Mimi & Ivan Ace
Nancy S. Anthony/The Sidney A. Swensrud Foundation
Francis Blake
Carla Bregman
Sara H. Brydges
Peter Buffington
Janet Cooke
Paula V. Cortés
The Creighton Family
David & Victoria Croll/
The Croll Foundation
Ronna & Neal Erickson
Gail McClelland Fenton & Marc H. Fenton
Dozier & Sandy Gardner
Lorna Gibson
Dorothy & Steven Gilman
Walter & Alida Greeley
Ann & James Hancock
Brian & Robin Hicks
John & Sarah Howe/JS Howe Family Foundation
Martha C. Kingsbury
Chris & Sue Klem
Joan LeBel
William R. Leitch
Allegra Lowitt
David & Marilyn Lyman
William & Amanda Madar
Carolyn McCane-Chin & David Chin
Patricia McKee & Donald Pease
Patrick McLampy & Rev. Priscilla Lawrence
Barbara Murphy
Al & Catherine Nierenberg/
Evergreen Charitable Fund
Lee Nordblom
J. David Officer & Dr. Marcia J. Wade
Cindy Ostrowski & Paul Cichocki
Jonathan & Jessie Panek

Robert & Amelia Rands
Diane Reynolds
Judy A. Samelson & William Schawbel
Dietrich & Julie Schlobohm
Kristin & Roger Servison
Anne & Tom Snyder
Peter Talbot
Drs. Sophie Vandebroek & Jesús del Alamo
Neil Van Sloun
Judith Whiteside, Christiana Montminy DeRosa, & Raymond J. Montminy Jr.

Founder's Circle: Gold \$10,000-\$24,999

Anonymous (13)
Catherine Alexander
Emily & John Alexander
David & Holly Ambler
Christopher Baldwin & Sally Reyring
Sylvia Barnard
Jennifer & Jonathan Barnes
Peter Barrer & Judith Nichols
Michael & Donna Bass
Cindy Batchelder
Anita & Josh Bekenstein
Family of Eliot Lee Bennett
Nancy & Bill Brotherton
Lalor & Patricia Burdick
Elizabeth J. & Robert M. Burke III
Dr. Paul A. & Mrs. Katie Buttenwieser /C&P Buttenwieser Foundation
Ann & Jared Chase
Franz & Anne Colloredo-Mansfeld
Susan Coolidge
Donald & Donna Cooper
Wendy Davis
Edmund P. DeLaCour/The DeLaCour Family Foundation
Michael Dempsey & Lynda Urgotis
Mrs. Mary & Dr. John Deyst
Jonathan & Katie Dick
Lynn & Stewart Edelstein/
Ruth Krauss Foundation, Inc.
Andrew J. Falender & Jaquelyn Lenth
Thomas Foster
Liz Frankel & Charlie Steinhorn
Nancy Goodman
Jamie Gorelick & Richard Waldhorn
James & Laura Hale
Philip & Deborah Hale
Sarah Hancock
Irene Haney
William Haney & Maura McCarthy
Alynn & Andrew Harvey
Jacob & Zita Hesterman
Heather & David Hill
J. Atwood & Elizabeth Ives
James Izatt
Janice Jorgensen & Karen Rosenbaum
Judith King/The Judy and Tony King Foundation
Mr. & Mrs. David S. Lee
Benjamin Liptzin & Liz Schneider
Bryan & Leslie Lorber/
The Lorber Foundation
Elizabeth Lyman
Grace Lyu-Volckhausen & Sharon Lyu-Volckhausen/
Tiger Baron Foundation Inc.
William F. & Sheila R. Macauley

Mark & Kimberly Marroni
Stephanie May & Bill Churchill
Kathy & Rives McGinley
Bill & Linda McQuillan
Kathryn & William Medford
Cody & Barbara Meissner
Mark Kimball Nichols & Lowell Massey
Holly Nixholm & Helen Donovan
Gail O'Keefe & Doug Melton
Edward N. Perry & Cynthia Wood/
Perry Wood Family Trust
Patricia T. & James W. Poitras
William & Helen Pounds
Neil Rasmussen & Anna Winter/
Neil & Anna Rasmussen Foundation
John & Linda Riehl
Nancy & Robert Rosenthal
Donna Ryan
Bill & Laurie Schutt
Carol & Irv Smokler
Dick Thornton
Sally B. Utiger
Eric & Sarah Ward
Elizabeth Willey
Linda Williams & Stephen Walch
Henry & Annie Woolsey
Delphine & Omar Zurkiya

Founder's Circle: Silver \$9,999-\$5,000

Anonymous (21)
Charles Adams & Eleanor Livingston
Bill & Ann Allan
Judith Ann Amelotte
Stuart H. Armstrong & Michael L. Levesque
Rebecca Arons & Eric Fastiff
William Babcock
Tom & Judy Bailey/
Bailey Family Foundation
Clark & Susana Bernard
Jerry & Grace Bird
Janet & Robert Bissell
Bruce Black & Mary Brogan
Cherise & Robert Bransfield
Elise & Pierce Browne
Mr. & Mrs. Norman R. Buck
Janet & Jeffrey Buckley
Ellen Cabot & Matthew Watson
James & Shannon Cabot
Kathi A. Cafiero
Patricia Callahan & David Dee
Henry & Pam Camosse
Catherine M. Campbell & Jack W. Orrock
Jonathan Chatinover & Elizabeth O'Connor
Richard & Patricia Chute
Miriam Clement
Bill Coady & Irfan Ali
Bayard & John Cobb
Katie & Matthew Cole
Chris Connolly & Marjorie Liner
Robert & Betty Cooperstein
Robb Corduck
Anita & Flora D'Angio
Peggy H. Davis
Mr. & Mrs. Thomas A. DeMarco III
Mary Dockray-Miller & Michael Miller
Eugene Bicknell Doggett & Nina Lord Doggett
Chris Doner
Lee & Tharon Dunn

Legacy of Bob and Mary Edmondson
 Arthur Ensroth & Barbara Waszczak
 Peter Erskine
 Alison & John Ferring
 Betsy & Jesse Fink
 Kate S. Flather
 Kathy & Martin Fogle
 John C. & Janet A. Fuller
 Anthony Giannelli
 Thaddeus R. & Elizabeth Gillespie
 Elizabeth & John Gilmore/
 Camden Foundation
 Arthur Goldstone
 Eric & Terry Goplerud
 Shirley Griffin
 Diane A. Griliches
 Eva Guinan, Greta, & Liam Friar
 Arlene E. Handschuch &
 Steven A. Kaufman
 Gayle & Bailey Hans
 Donald F. Henderson
 Mary R. Herlihy
 Christina T. Hobbs ✪
 Annie Hollingsworth & Harry Hanson
 Frank Isik & Nicole Gibran
 Richard & Sandra Johnson
 Sally Johnston
 Robert A. Jonas & Margaret Bullitt-
 Jonas/Living Springs Foundation
 Gerald S. & Linda B. Jones
 Kenneth M. Jones
 Ann & Paul Kaplan
 Jeffery Keffer & Suzanne Costello
 Scott & Jill Keiter
 Lorna Keith
 Elaine & Woodie Lackey
 Virginia L. Lacy
 Nan Laird & Joel Altstein
 Miriam G. Lasher
 Virginia Maloney Lawrence
 Dr. Diane M. Lebel
 Carol & Martin Levin
 Nathaniel & Karen Levy
 Mark & Mary Lunsford
 James & Robert MacGregor/
 James MacGregor Trust
 Andrew S. Magee
 Gary & Karen Martin
 Martha Mazzone
 Eileen McDonagh & Robert Davoli
 David McPherson & Gail Gugel
 Julianne & David Mehegan
 Elizabeth Mellor
 Erin & Nathaniel Meyer
 Sharon A. Miller
 David A. Moon
 Deborah & Timothy Moore
 Eben & Heather Moulton
 Robert J. Myslik
 David & Sharon Neskey
 Andrew S. & Samuel S. Pang
 Jane M. & A. Neil Pappalardo
 Michael Pappone & Diane Savitzky
 Mary F. Parker
 Alan & Judy Pemstein/
 Aksel Nielson Foundation
 Anthony & Karen Pierson
 Phyllis Pollack
 Brandon Pollock
 Nancy Poor
 George Putnam III & Kathy Putnam
 Sally Quinn
 Cornelia & Wallis Reid

Margaret L. Rhodes
 Abby A. Rockefeller
 Jeffrey & Karen Ross
 Susan Sargent & Tom Peters
 Eric & Susan Schultz
 Gerie Schumann
 Willow B. Shire
 Curt & Sarah Smith
 Judy Smith & Kenyon Fairey
 David & Mary Smoyer
 Nancy B. Soulette
 Kaye & Peter Speert
 Lee & Judith R. Spelke
 Jackie Spencer & Tom Mattox
 Jim Sperling & Ginny Loeb/
 The Dorothy and Jonathan Rintels
 Charitable Foundation
 David & Donna Sprague
 Kathleen & Robert Stansky
 Susan Surova & Edward Janusz
 Ralph & Vicki Tate
 Robert & Sandra Taylor
 Donna & Ronald Thompson
 Mrs. John H. Valentine
 Deborah Walther & Bruce Beane
 Stephen L. Wasby
 Liz Nelson Weaver
 Anne Welch & Stephen McMillan
 Wells Family Fund
 Donna & Edward Williams/
 The French Foundation
 Betty & Wayne Wyckoff
 Munirih & Krishna Yeshwant
 John Young & Melanie Lowe/
 Jane S. Young Charitable Trust
 Eric Zimmerman & Audrey Kalmus

Founder's Circle: Bronze

\$2,500-\$4,999

Anonymous (16)
 Mark & Laura Adamczyk
 Deborah & Michael Alexander
 Mark & Patrice Allen
 Steven Allen
 Jeffrey & Katharine Allsopp
 Annemarie Altman
 Dorothy Altman
 Irene Antkowiak
 Dr. Elissa B. Arons/Arons
 Family Foundation
 Drs. Barbara & John Balsler
 Marygrace & Peter✪ Barber
 Mary Ann & Richard Barnes
 Gail & Robert Bedoukian
 Maxa Berid
 Sally Bickford
 Claire Blathford
 Pengwynne Blevins
 Doreen & Bruce Bolnick
 Gail Boyajian & Gerry Bergstein
 Bari Boyer & Marshall Katzen
 The Brach Family Fund
 Janet & John Bush
 Patricia S. Cable
 Elizabeth Cabot
 Nancy L. Cantelmo
 Alfred D. Chandler III &
 Susan Esco Chandler
 Julie Cheever
 Susan B. & David D. Clark
 Dennis & Marie Corcoran
 Cynthia & Tom Costin
 Carrie & Christopher Crane
 Robert & Rigney Cunningham

Victoria R. Cunningham Family
 Cherry & Nigel Curlet
 Kevin Darcy & Stephanie Prisch
 Glorianna Davenport & Evan Schulman
 Joanne Davenport
 Jaishree & Gururaj Deshpande
 Sally Digges & James Arnold
 Jane & Lawrence Dingman
 Emmett Draz & Bibi McGill
 Julian Draz
 Robert & Sue Dring
 Frank Dunau & Amy Davis
 Hans Fehlmann
 Anthony & Stephanie Ferlazzo
 Danielle Feuillan
 Rachel Fink & Tom Dennis
 Annette & Gary Ford
 Sara & Ed Foster
 Heather & Stephen Fredette
 Bill & Marsha Gette
 Claudia Goldin
 Gene & Melina Goldstein
 Mary Brinson Griffin & Andy O'Neill
 Ronald & Katherine Groves
 Lindsey & Zack Gund/Zachary and
 Lindsey Gund Foundation
 John Hall
 Jane C. Hallowell
 John & Jillian Hayes
 Jan & Ruth Heespelink
 Elizabeth H. Heide
 Joseph & Victoria Hibbard
 Jeanna & Richard Hopper
 Benjamin & Jean Horne
 Jonathan & Anna Howell
 William Hunt
 Bonnie & Stuart Hunziker
 Richard Hussong &
 Melinda E. Stewart
 Benjamin Ives & Sarah Morrison
 Allan Johannesen & Helen M. Shuster
 David & Ellen Johnson
 Jennifer Johnson
 Laura A. Johnson & Arthur W. Rogers
 Leonard & Marjorie Johnson
 Patricia Spinney Joyce &
 Edward Joyce
 Donald P. Kalischer
 Edward Kaye & Alyssa Lebel
 Helen Keeler
 Gillian S. Kellogg
 Erik & Sarah Knutzen Family
 Bruce & Ellen Kunkel
 Kyle Lawrence
 Linda & Jeffrey Levin-Scherz
 Susan & John Littlefield
 Anne S. Lombard
 Victoria Lowell
 Merloyd Ludington & John Myers
 Donald MacFarlane
 Anita & Michael Malina
 Lissa & Mac McBurney/
 The Clinton Family Fund
 Karen & Warren McFarlan
 David & Melissa McGraw
 The McGuinness Family
 Bernard J. McHugh &
 Frances H. Clark
 Elizabeth & John McQuillan
 John & Katherine Metzger
 Heather S. Miller
 Mary Moran
 Cynthia & Thomas Murray



17
 MILES

of new trails created at our
 wildlife sanctuaries across
 the state.



3,254
 TREES

planted at Arcadia Wildlife
 Sanctuary in Easthampton
 during the two-year floodplain
 forest restoration project.
 Floodplain forests are
 uncommon in Massachusetts,
 hosting rare plants and wildlife
 habitat, storing stormwater
 during floods, and keeping
 carbon out of the atmosphere.

50,000
ACRES

enrolled in the Foresters
for the Birds program.

Old Baldy



1,721
ACRES

protected this year,
through fee ownership and
Conservation Restrictions.

David & Virginia Murray
David & Jill Nalven
Ariane Nick & Alan Wright
John O'Keefe & Mark Smith
Steven Olanoff & Cheryl Toffel
Lisa & Richard Oliver
David J. O'Neill & Susan Bogue Myslik
Barbara Palm
Nathaniel & Juanita Peters/
J&H McCaffery Charitable Trust
Morey Phippen & Brian Adams
Drs. Nick Picariello &
Barbara Brennessel
Scott & Candace Plotkin
Renata Pomponi & Karl Büttner
Bancroft & Mary Poor
Daniel & Susanna Pratt
Peter & Meghan Quigley
Mira Rabin & Thomas Whitman/
The Nararo Foundation
Margaret Ramsey & John McCluskey
Paula Rayman
Marc Reardon & Emily Isberg Reardon
Jane & John Ritterson
Professor & Mrs. Nicholas Robinson
William & Janet Romanishin
Robert Rotberg
Jennifer & Jason Ryan
Eva Ryden
Kathryn & Michael Sarcione
Linda & Ron Savage
Barbara & Stanley Schantz
Michael & Jennifer Sexton
Janet Sisterson
Craig Smith
Patricia Smith & Frances Lussier
Brooke Stevens &
Thomas L. McCorkle
Lauren & Stephen Stimson
John Stix & Dora Knez
David & Patricia Straus
Garrett J. Stuck & Pamela Coravos
Chester & Jane Swett
David Van Ness Taylor/David V.N.
Taylor Foundation
Susan & William Thornton
Conrad H. Todd
Eli & Laura Valk
Dalius & Mary Vasys
Drs. Sheila Vince & Michael Boss
David & Jade Walsh/
The Free Lunch Foundation
Dave & Kitty Weaver
Nancy L. Weiss
Kelly Wennik
Michael Wilson & Susan Greenleaf
Elizabeth Wright
Corey Zehngelot & Adam Friedman

President's Circle

\$1,250-\$2,499

Anonymous (22)
Thomas Abe
Dale & Alison Abrams
Elaine & Martin Abrams
Jan & John Adams
Linda Adler
Virginia Akabane
Charlene Allen & Joanne Cancro
Bird Anderson
Sandra Anderson & Meg Wallace
Rich & Heidi Angle
Thomas Annese & Rebecca Hamlin
Emily Anthony & David Maymudes

Joanne & Dick Arnaud
Rick Arnaud
Dick & Sally Avery
Susan R. Avery
Kathy & Russell Ayres
Hillel & Liliana Bachrach
Jean✿ & Ralph Baierlein
Tim Bancroft & Julie Baer
Kristin Barr & David Pitkin
Charles & Nancy Barry
Liz Bastable & Jose Sesin
James Becker & Aber Lynch
Barbara Bernardin
Constance & Stephen Bernier
Felicia Bianchi
Gregory & Laura Bibler
Richard O. Bierregaard Jr. &
Catherine Dolan
Greg Bilezikian
Tom Birmingham & Amy Killeen
Jennifer Black & Lora Goldston
Camilla Blackman
Amy & Joshua Boger
Jeremy & Madeline Bohrer
Alice & Nelson Bolen
Ian & Sarah Bouchard
Patricia Bowie & Carletta Woods
Jan & Kerry Brandin
Jonathan Brandon & Harriet Scheft
Nancy & Russell Braun
Robin Bray & David Nash
Daniel & Julia Brody
Mrs. Brian A. Brooks
Cynthia Brown
John Bullitt
John & Lale Burk
Katharine F. Burnett✿
Charles Burnham/
Burnham Foundation
James Campbell
Virginia Candee & Mark Schreiber
Dixie Carlisle & Linda Yenkin
Catherine Cave & Peter Rothstein
Iris & Micah Chase
Betty & Larry Chelmow
John & Peggy Christie
Cheryl & Keith Ciampa
Marcia & William Cini
Drs. Frank Clark & Lynn Delisi
Gary & Helene Clayton
Alan Cody & Edith Moricz
Christine & Eric Cody
David Cole & Betty Slade
Evan Comjean
Katherine Converse
Deborah Cramer & Daniel Greenbaum
Mary Elizabeth & Scott Cranton
Dr. Modestino &
Mrs. Nancy Criscitiello
Edward A. Cunningham IV &
Julia Lee Cunningham
Edward & Sarah Curley
Melvin S. Cutler/Melvin S. Cutler
Charitable Foundation
Emily Dahl & Michael Kuczewski
Philip H. Davis
Richard & Deborah Davis
Carol Decker & Kathryn Kramer
Michele Demarest & John Patterson
Nicolas DiCiaccio & Marguerite
Shepard-DiCiaccio
Douglas Dick & Ann Easterbrooks
Birgitta Dickerson & James Crowley

Steven Dickman & Sharon Bober
John & Maria Dirlam
Judy & Chase Donaldson
Heather Draz
Suzanne Dufault
J. W. & Susan Dunlaevy
William Duvall & Joanna Anderson
Deborah & Philip Edmundson
Nancy & Peter Eisenbarth
Frederick Eck
Alexander Ellis III
Dorothea Endicott
Anne & Samuel Engel
Fred & Patty Eppinger
Madeline Etkin & Jeff Hayward
Martha Farnsworth
Charles & Carol J. Fayerweather
Wenley Ferguson & John Wolf
Gail Ferreira
Alan Field
Anne & Paul Fitzgerald
Sophia & Will Fitzhugh
Warner & Mary Fletcher
Delia Flynn
Rick & Joan Francolini
Nora Frank & Walter Houseman
Beth & Douglas Freeman
AnneMarie & Mark Freitas
Mr. & Mrs. Thomas D. French
Beth & Bruce Gamble
Michael J. & Linda L. Garrity
Marcy Gelter & Michael Scott-Morton
Maxine Giammo &
Geoffrey Von Maltzahn
Julia & Jonathan Gold
Leslie Fraser Gold & Alex Gold Jr.
David & Patricia Gosda
Elizabeth Gould
Martha P. Grace
Larry Greene
Stephen Griffin & Frank Mockler
Alfred & Sally Griggs
Larry & Rita Grossman
Craig & Heather Gruber
Barbara Guay
Susan Gunderson
Joe Hale & Beth Dininio
Lucy Hale & Christopher Carcerano
Marion & Robert Hammond
Ellen & Scott Hand
Agnes Hanna
Douglas & Susan✿ Harding
Caleb & Amanda Harty
William Hayes
Ann Helwege
Fred Hennie
Edith Herbeck
Timothy Hilton
Jay Himmelstein & Ellen Ruell
Bonnie Hirsh & Richard Bisk
Kenneth R. & Janet S. Hoffman
Sam & Will Hopper
Richard Horn
Bob & Kathy Hubby
Ruth & Bob Hucks
Ellen & James Ingram
Russell & Janice Isaia
Steven Iskra & Barbara Baker
Jennifer James & Douglas Hinckley
Barbara John
Ingrid Johnson & Deborah Nelson
Martha Jorz

Jennifer & Jeff Judkins
 John & Karen Juros
 Alison & John Kaar
 Barton Kamp
 Anne Kane
 Alyce & Michael Kaplan
 Jonah & Julia Keane
 Kay Kelley
 Joyce & John Kemp
 John & Pam King
 Natalie Kirkland & Chris Velltruo
 Frances & Thomas Knight
 Diane Krause
 Maria & Wes Kusssmaul
 Ellen Lahlum
 Lynn L. & Richard Landy
 Holly Langer
 Rob Larsen & Judith Robichaud
 Patricia Lawrence
 David & Susan Lazarus
 Carolyn Lee & Stephen Gabeler
 Mr. & Mrs. Henry Lee
 Alice & Matt Lehrer
 John & Nina Lipkowitz
 Debbie Listerneck
 Thomas Loftus & Patricia O'Hearn
 Richard & Roberta Longley
 Gwyn Loud
 Dianne Luby
 Peter Macdonald
 Marilyn & Don Malpass
 Susan Manero
 Thomas Manning & Barbara Polan
 Cynthia Manson & Timothy Lavallee
 Sue & Ted Mara
 Benjamin March
 Bradd & Susan Martone
 David May & Cynthia Young
 Robert & Susan Mayer
 Brian & Anne Mazar
 Robert McCrae & William Newhall
 Jim & Sarah McGregor
 Kathleen Mcneil
 Dan McNiff
 Kathleen McShane &
 Frederic B. Lowrie Jr.
 Lisa Meeks
 Hank & Kathrin Midgley
 Justin & Karen Miel
 Christopher Miller &
 Robin Feuer Miller
 Stephen & Christina Miller
 Paul & Ellen Mintzer
 Jane Moosbruker
 Ken Morton
 Jane & William Mosakowski
 Cordelia & Stephen Munroe
 Seanan Murphy & Sarah Leinicke
 Mr. & Mrs. George Mutrie
 Jill Neubauer
 Martha Nichols & Robert Howe
 Philip & Janet Notopoulos
 Timothy O'Brien & Kim Novino
 Darrah O'Connor & Sarah Henken
 Delia O'Connor & Edward O'Neil
 Alison O'Hare
 Mary O'Neil
 Judith & Robert Outman-Conant
 Arthur & Constance Page
 Dr. David C. & Dr. Elizabeth H. Page
 Bradley & Jennifer Paradee
 David & Shirley Parish
 Barbara & Oliver Parker

Constance Parks
 Gail Pattison
 Andrea Peraner-Sweet &
 Mitchell Sweet
 Edward & Slocumb Perry
 Winfield & Linda Perry
 Mary & Jim Persky
 Greta & David Peterson
 Dennis J. Picker &
 Jenifer Burckett-Picker
 Joan Pierce
 Adele Pike & John Hodman
 Carol & Paul Pilch
 Konstantin & Svetlana Pyzhova
 Katherine Raymond
 Cathleen Read & David Locke
 Polly & Brock Reeve
 Deborah Reichert &
 Chanchal Samanta
 Janet Reinhart
 Jeannette & Hadley Reynolds
 James & Krystal Rheinwald
 Drake & Sarah Richey
 Dorothy & Owen Robbins
 Darcy & Phil Robinson
 Margaret Robinson
 Mary Etta Robinson
 Eleanor Perkins Robinson &
 The Rev Mark KJ Robinson
 Christine & Jeffrey Rodek
 Shelley & Todd Rodman
 Kathleen Rogers & Rick Teller
 Philip Rosenkranz
 Jessica Roy & Matthew Templeton
 Joseph & Jennifer Rumbough/
 Whitehall Foundation, Inc.
 Andrew Rushford & Kate Shamon
 James & Roseanne Saalfeld
 Marsha C. Salett
 Gail & John Sampieri
 Ann & Tom Savastano/
 Savastano Family Foundation
 D. Jill Savitt
 Susan Schappert &
 Daniel M. Hellerstein
 John & Susan Schofield
 Robin Schweikart & David Farrington
 Michael & Susanne Scipione
 Andrew & Stacey Scott
 Allan & Joanne Sgroi
 Patricia Shannon &
 Frederick Streams
 Ann & Doug Sharpe/Sharpe Family
 Foundation
 Alice M. Shearer
 Patrick & Katherine Sherbrooke
 Jencie & William Shipley
 Binkley & Paula Shorts
 Emily Shugarman & Ethan Robbins
 Katie Sigelman & Scott Brown
 Sandra & Robert Silk
 Kathleen Skelly
 Deborah & Robert Slotpole
 Sherley Smith & Frederic Gardner
 Karen R. Sollins
 Eva Sommaripa
 Lisa Standley
 Mr. & Mrs. Vincent P. Stanton
 Katharine Stell
 Nancy & Robert Stewart
 Richard Stillwell
 Susan Straight
 Paul Sullivan
 Jim Suozzo & Ann Ellery

Susan Swartzlander
 Debbie Swenson & Larry Capodilupo
 Noel Tessier
 Peter & Sally Tirrell
 George & Lynne Tonna
 Kevin Truex & Frank Burnes
 Andrea & Michael Urban
 Virginia Ursin
 Krestie Utech
 Kathleen & Peter Van Demark
 Mark Vogt
 Tim Wadlow & Erin Largay
 Robert & Margaret Wallis
 Frederick Walters
 Maureen & Paul Ward
 Scott Wayne
 Amy & Scott Weidensaul
 Jan & Laurie Werner
 Nathaniel & Eugenia Wheelwright
 Richard & Deirdre White
 Dudley & Judith Williams
 Peter & Shirley Williams/Brigham
 Hill Foundation
 Dudley & Sally Willis
 Alan Wilson &
 Charlotte Bendsdorp Wilson
 Alison Wintman
 Kimberly Wissemann
 Eileen & Robin Wood
 Donald & Ruth Wright
 Gail & Jonathan Yeo
 Susan & Robert Yurkus
 Elisabeth Zaffino
 George Zipf
 Amanda Zoellner & Bryan Fink

**Corporations, Foundations, and
 Other Supporters**

\$25,000+
 Anonymous (3)
 Alvarium Foundation
 Bafflin Foundation
 Benevity Community Impact Fund
 Bigelow Family Trust
 Bilezikian Family Foundation, Inc.
 Blue Cross Blue Shield of
 Massachusetts, Inc.
 The Bolotnick Seaver
 Family Foundation
 Cabot Family Charitable Trust
 E & L Campbell Family Foundation
 The Cedar Street Foundation
 Chapman Construction/Design
 Copeland Family Foundation
 The Couch Family Foundation
 Josephine and Louise
 Crane Foundation
 The Edey Foundation
 The Feigenbaum Foundation
 Greater Worcester
 Community Foundation
 The Nancy Foss Heath and Richard B.
 Heath Educational, Cultural, and
 Environmental Foundation
 Hermann Foundation, Inc.
 Sigmund E. and
 Barbara B. Herzstein Fund
 A.G. Leventis Foundation
 Lookout Foundation
 Manomet Center for
 Conservation Sciences
 Marine Biological Laboratory
 MathWorks, Inc.
 Amy B. Morrill Charitable
 Lead Annuity Trust



274
UNIQUE BIRD
SPECIES
 spotted during 2021
 Bird-a-thon, which
 raised \$310,000.

Oak Knoll



530,000+
KILOWATT HOURS
 of electricity produced from our
 photovoltaic arrays.



22

ELECTRIC VEHICLE

charging stations at 16 sites, from Pleasant Valley in Lenox to Wellfleet Bay in Wellfleet.



Piping Plover © Matt Filosa

275
PAIRS

of Piping Plovers protected by our Coastal Waterbird Program team, 61 more pairs than last year.

National Fish & Wildlife Foundation
National Wildlife Federation
The Eric & Jane Nord Family Fund
Amelia Peabody Charitable Fund
REI
Samelson-Lowitt Foundation, Inc.
William E. Simon Foundation
Takeda Pharmaceuticals
North America, Inc.
Tern Foundation
Three Bays Preservation, Inc.
Peter & Elizabeth Tower Foundation
University of Southern Maine
The Van Sloun Foundation
Wallace Research Foundation

\$10,000–\$24,999

Anonymous (2)
ABCD, Inc.
Alces Foundation
John W. Alden Trust
Arbor Day Foundation
Berkshire Blanket & Home Co.
The Bobolink Foundation
Boston After School & Beyond Inc.
Boston Center for Blind Children
Boston Scientific Foundation
The Susan Bradbury Fund of the Essex
County Community Foundation
Elise B. and Earl Bradway
Charitable Fund
Fred J. Brotherton
Charitable Foundation
Caswell Foundation Trust
Cell Signaling Technology, Inc.
Chervenak-Nunnalle Foundation
Cooperative Bank of Cape Cod
The Cricket Foundation
Fred Harris Daniels Foundation
Rosemary Davis Memorial Fund
of the Greater Worcester
Community Foundation
Edith W. and John A. Dockray
Charitable Foundation
Oliver S. and Jennie R. Donaldson
Charitable Trust
The Max and Victoria Dreyfus
Foundation, Inc.
The Echo Charitable Foundation
Mary-Louise Eddy and
Ruth N. Eddy Foundation
Farnsworth Fund
Felix Neck Wildlife Trust, Inc.
Fields Pond Foundation
The Jane & Jack Fitzpatrick Trust
The Marshall Frankel Foundation
Groundwater Fund
The Guardian Life Insurance
Company of America
Harding Educational &
Charitable Foundation
Hazeldean Foundation
Highland Street Foundation
Island Foundation, Inc.
Martha's Vineyard Shipyard
William J. McKee Jr.
Charitable Foundation
Medical Information Technology, Inc.
Lucia B. Morrill Charitable Foundation,
Bank of America, N.A., Trustee
Nantucket Golf Club Foundation
The Nord Family Foundation
North American Association for
Environmental Education
Northampton Education Foundation
The Pegasus Foundation

Richard & Ann J. Prouty Foundation
Judy Record Conservation Fund
Red Acre Foundation
River Stewardship Council
Margaret Walker
Purinton Foundation
ReMain Fund
John J. Sacco and Edith L. Sacco
Charitable Foundation, Bank of
America, N.A., Co-Trustee
Saquish Foundation
Robert F. Schumann Foundation
David Sigelman and Patricia
McDonagh Memorial Fund
Sylvan Nursery Inc.
Texas A&M University
Tiger Baron Foundation
Towards Sustainability Foundation
Edwin S. Webster Foundation
William P. Wharton Trust
The Willow Tree Fund
The Winston Foundation, Inc.
YourCause, LLC

\$5,000–\$9,999

Anonymous (1)
The 1434 Foundation, Inc.
Jes Avanti Foundation
Beech Tree Trust
Belmont Savings Bank Foundation
Bird Watcher's General Store
Bluebird Fund
Boston Mutual Life
Insurance Company
Boston Partners Financial Group LLC
Bristol-Myers Squibb Foundation
Cape Associates
Charitable Adult Rides &
Services, Inc.
The Ann E. Clark Private Foundation
The Ogden Codman Trust
Community Foundation of
North Central Massachusetts
Davis Conservation Foundation
Ruth H. &
Warren A. Ellsworth Foundation
J. Irving England &
Jane L. England Charitable Trust
Facebook
The Fieldstone Foundation, Inc.
Ellen Abbott Gilman Trust
The GoodCoin Foundation
Hanover Insurance Group Foundation
Harman Family Foundation
Intel
Keiter Builders, Inc.
Kettering Family Foundation
Lovett-Woodsum Foundation
Howard W. Maxim Foundation
MBS 2012 Charitable Trust
McLaughlin & Moran, Inc.
Margaret Jameson
Mellor Memorial Fund
Michigan Technological University
Moon-Loomis Family Fund
MutualOne Charitable Foundation
Nantucket Island Land Bank
The Naturalists' Club
Network for Good
New England Biolabs Foundation
New England Patriots
Charitable Foundation, Inc.
Newburyport Five Cents
Savings Bank
The Robert Treat Paine Association

Quabbin-to-Cardigan Partnership
Rathborne Companies East, LLC
Rockwell Foundation
Save Popponesset Bay, Inc.
Phyllis Wheat Smith
Naturalists' Fund
Abbot and Dorothy H.
Stevens Foundation
Stifler Family Foundation
Summer Fund
The Nellie Leaman Taft Foundation
United Way of Central
Massachusetts
University of Wisconsin
Walt Disney Company Foundation
Henry T. Wiggin Charitable Trust
Wilkinson Ecological Design, Inc.
M.S. Worthington Foundation

\$2,500–\$4,999

AbbVie Bioresearch Center
Alkermes, Inc.
AmazonSmile Foundation
The Suzanne Bassett 1999
Revocable Trust
Berkshire Taconic
Community Foundation
Brabson Library &
Educational Foundation
Bright Funds Foundation
Community Foundation of
Western Massachusetts
EarthShare
Helen E. Ellis Charitable Trust,
Bank of America, N.A. Trustee
Evergreen Foundation Inc.
Foundation for MetroWest
The Free Lunch Foundation
Friends of Little Blue
GA Financial Company
General Dynamics-Advanced
Information Systems
Greater Lowell Community
Foundation
Hanson Grain
The Hart Foundation
Helen G. Hauben Foundation
Hollingsworth & Vose Company
HUB International Limited
Institution for Savings
Charitable Foundation
Linder's, Inc.
Massport
Mill Town Foundation Inc.
Nantucket Pond Coalition Fund
Panoram Foundation Inc.
Quebec-Labrador Foundation, Inc.
Schwartz Charitable Foundation
Shurtleff Children's Services, Inc.
Southeastern Massachusetts
Pine Barrens Alliance, Inc.
The Sudbury Foundation
The Swan Group
The Toop Family Fund
Tufts Health Plan Foundation
University of Illinois
W. Vernon Whiteley, Inc.
Whole Foods Market
Community Giving Program
Wilson Conservation Trust
Carl Zeiss SBE, LLC

\$1,250–\$2,499

365Z Foundation
Adams Cheshire Educational
Partnership Fund

Bank of America Matching Gifts Program
 The Bayside Restaurant
 Beacon Hill Garden Club
 Berkshire Bank Foundation
 Charles Sumner Bird Foundation
 Brillo-Sonnino Family Foundation
 Buzzards Bay Coalition
 Cambridge Community Foundation
 Cape Ann Savings Bank
 Chapel of St. James the Fisherman
 Copley Fine Art Auctions, LLC
 The Copper & Slate Company Inc.
 Cronigs Market
 Devereaux Charitable Foundation Trust
 Farm Neck Foundation
 Fleet Electrical Service, Inc.
 Friends of Sengekontacket, Inc.
 Garden Club of the Back Bay, Inc.
 GE Foundation
 IBM International Foundation
 LDA Architecture & Interiors, LLP
 Alfred V. Lincoln Trust
 Susan Manero & Associates LLC
 Marblehead Neck Association
 Martha's Vineyard Bank
 Charitable Foundation
 Norbell Foundation
 Nuttall Ornithological Club:
 Blake-Nuttall Fund
 The Queenan Foundation Inc.
 Quidnet Squam Association, Inc.
 Rotary Club of Pittsfield
 Schwab Charitable Fund
 Silver Sands Condominium Assoc.
 Sims Metal Management
 Lizzie Stimson Memorial
 Scholarship Fund for the
 Performing & Creative Arts
 The Stoddard Charitable Trust
 Margaret Evans Tuten Foundation
 United Way of Rhode Island
 UnumProvident Corporation
 Verizon Foundation
 W.E.B. DuBois Middle School
 Field Science Studies
 Wild Birds Unlimited/Danvers

Government Agencies and Organizations

Local and State

Commonwealth of Massachusetts
 Executive Office of Energy and
 Environmental Affairs
 Department of Agricultural
 Resources
 Department of Conservation
 and Recreation
 Division of Fisheries & Wildlife
 Natural Heritage &
 Endangered Species Program
 Massachusetts Cultural Council
 Massachusetts Department of
 Elementary & Secondary Education
 Dukes County
 Marine Biological Laboratory
 Southeastern Regional Planning and
 Economic Development District
 Town of Chatham
 Town of Edgartown
 Town of Falmouth
 Town of Hull
 Town of Lenox
 Town of Marshfield
 Town of Newbury
 Town of Scituate

Town of Tisbury
 Town of Truro
 Town of Westport
 Town of Yarmouth
Federal
 Institute for Museum and Library Services
 National Oceanic &
 Atmospheric Administration
 National Park Service
 River Stewardship Council
 U.S. Department of Agricultural Resources
 USDA Natural Resources
 Conservation Service
 U.S. Fish & Wildlife Service
 U.S. Environmental Protection Agency

Bequests

Jessica M. Alm
 Oakes Ames
 Ellen Baird
 Jennie Ray Bush
 Daniel R. Charbonnet
 Dorothy Conkey
 Doris Countryman
 Anne R. P. Dewees
 Margaret Doyle
 Jane C. Fitzsimmons
 Jeanne L. Johnson
 Daniel D. Karr
 Joan M. Keefe
 Priscilla Long
 Frances Loomis
 Susan G. Loring
 John Aitken McCracken
 Mary McLaughlin
 Nancy Ann Mondock
 Ruth Packard
 Laurence Phillips
 Elizabeth F. Sayman
 Virginia Shaw
 Frances A. Shirley
 Lillian Stone
 John L. Thorndike
 David H. Wallace
 Warren MacPherson Wells Jr.
 Bernard L. Zulalian

The Tern Society

We are honored to list the following individuals who have established a life income arrangement with Mass Audubon or have named the organization as a beneficiary in their will or estate plan. ♡=member of the Tern Society who passed away this year.
 Anonymous (54)
 Gail Abbott
 Elaine Abrams
 Martin Abrams
 Diana Abrashkin
 Mimi & Ivan Ace
 Donna Adams
 Jan & John Adams
 Katherine Adams
 Virginia Akabane
 Deborah Alexander
 Steven Allen
 Deborah Almy
 Donna Amaral
 Judith Ann Amelotte
 Carol Anderson
 David Anderson
 Benedict & Clarice Andreozzi
 Nicholas Clapp Arguimbau

Stuart H. Armstrong &
 Michael L. Levesque
 Karl Audenaerde
 Dick and Sally Avery
 Charles Nancy Barry
 Ruth Haskins Bass
 Andrea & Michael Bean
 Nancy and Rein Beeuwkes
 Lolly Bennett
 Tom Birmingham & Amy Killeen
 Dr. Bruce Black & Dr. Mary Brogan
 Jennifer Black & Lora Goldston
 Doreen & Bruce Bolnick
 Bojana Bosanac
 Helen Bowdoin
 Raymond J. Boylan Jr.
 Julie Brandlen
 Maurice & Sharon Brodeur
 Mary Brogan
 K. Brower
 Sara H. Brydges
 Robert Buchsbaum
 Kathi Cafiero
 Margaret Cain
 Catherine Campbell & Jack Orrock
 Bruce A. Childs
 Nancy Chisholm
 William J. Claff
 Bill & Libby Cline
 Catherine Coleman
 Kenneth & Sally Collinson
 Katherine Converse
 Caroline and John Cook
 Clifford & Roxanne Cook
 Richard Coonan
 Beth Cooper
 Paula Cortés
 Modestino & Nancy Criscitieillo
 Patricia Crow
 Martha Cutler
 Janet Cutman
 Stephen & Mary Beth Daniel
 Judith R. Davis
 Phillip H. Davis
 Karen Deane
 Karen L. Derro
 John & Maria Dirlam
 Carol Disney
 Kathryn Disney
 Eugene Bicknell Doggett &
 Nina Lord Doggett
 Wendy Dwyer
 Anne Eberle
 Erin Ellingwood
 Jim Ellis & Betty Ann Sharp
 Richard J. Erickson & Laurie S. Miles
 Ronna Erickson
 Ralph Eustis
 Jan Evans
 Gay Ferguson
 Colleene Fesko
 Tracy Fischer
 Anne Foerster
 Michael Foley
 Dale Ford
 Sara Foster
 Thomas Foster
 Dr. and Mrs. Albert & Suzanne Frederick
 John Freeman & Linda Lacki
 Elaine S. Frongillo & Joseph W. Saltzman
 Greta Gabriels
 Cyrus & Joanne Gibson

Lorna Gibson
 John W. Gintell
 Terry Goplerud
 Mary B. Griffiin
 Diane Asseo Griliches
 Pat Gunning
 Paul Guthrie
 Sylvia Charman Guthrie
 Alynn & Andrew Harvey
 C. Hayton
 Donald Henderson
 Karin Hendricks
 Gretchen Henkel
 Robert & Ruth Hucks
 Jeff Hughes
 Nora Huvelle
 Kirsten Hviid
 William & Alice Iacuesssa
 Gillian Ingram
 Elizabeth & Woody Ives
 James Izatt
 Jay Janell
 Carol A. F. Jeffery
 Shirley Muirhead Jenkins
 Christine Johnston
 Virginia Jonas & Lester Sackett
 Linda B. Jones
 Virginia Jordan
 Jonathan Kapsten
 Jeannie Kelly & Rev. Kenn Hurto
 Richard & Carolyn Kent
 Mary Ellen Kiddle
 Amy Killeen
 Beth Kimball
 John & Maribeth Klobuchar
 Edward Koenig
 Diane Krause
 Linda Lacki
 Virginia L. Lacy
 Ellen Lahlum
 Miriam Lasher
 Edward Lawrence
 Joan LeBel
 Elizabeth Lee
 William Leitch
 Corinne Lillie
 Susan Lloyd
 Martha Locke
 James & Maureen Loible
 Christine Ann Lojko
 Anne S. Lombard
 Daniel J. Lombardo
 Stephen & Valerie Loring
 Anni Loughlin
 Dianne Luby
 Linda & Robert MacIntosh
 Patricia MacKinnon
 Don & Marilyn Malpass
 Donna Marchant
 Mark & Kimberly Marroni
 Ellen M. McBride
 Margaret McBride
 George & Suzanne McLaughlin
 Tim & Sheryl McMullen
 Jane Mead
 Julianne Mehegan
 Barbara Merrill & David Twombly
 Rosemarie Meuse
 Heidi Meyer
 Laurie Miles
 Mary C. Moran

Adrianna Morris
 Thomas Mullen
 Barbara Munkres
 Barbara Murphy
 Pam Musk
 Janet Nichols & James Everett
 J. David Officer & Marcia J. Wade
 Kate Oliver
 Barbara Olson
 Karen O'Neill
 Dr. Rodney W. Owen and
 Martha M. Owen
 Jonathan & Jessie Panek
 Mary Paradiso
 Mary Parker
 Esther Pelletier
 Robert & Veronica Petersen
 Kirk Peterson
 Constance Pike & Michael Magee
 Helen & William Pounds
 Susan Reiher
 Jeannette Reynolds
 Linda Reznikiewicz
 Judith Robichaud & Rob Larsen
 Margaret Robinson
 Joseph Roche
 Shelley & Todd Rodman
 Alan & Lynda Roe
 Lois Rose
 Nancy Roseman
 Barbara Rosen
 Marilyn Rosenfeld
 Philip Rosenkranz
 Ms. Judith L. Rosenthal
 Daniel & Elizabeth Russell
 Allison Ryan
 Kathleen A. Sacco &
 Elizabeth R. Sullivan
 Margaret Sagan & Michael Simons
 Marsha Salett
 Joseph Saltzman
 Faith Ford Sandstrom &
 Frederick H. Sandstorm
 Christine Sanni
 Barry & Libby Schiller
 Peter & Naomi Schmidt
 Robin Schweikart &
 David Farrington
 Karen Seif
 Robert Eric Seletsky
 Kathy Seymour
 Binkley Shorts
 Evelyn Silver
 Donna L. Smith
 Judy Smith
 Tawnya Smith
 Theodore S. Smith Jr.
 Judith R. & Lee Spelke
 Patricia Spence
 Susan St. John
 Lisa Standley
 Martha Stearns
 Liz Stell
 Campbell Stewart
 Susan Straight

David & Patricia Straus
 Eric Swanson
 Susan Swartzlander
 Susan Primm Thel
 Alison & Michael Tinius
 Conrad Todd
 Marty & Juliette Touchette
 Frank & Theresa Tripp
 MaryJane Tucci
 Kathleen & Peter Van Demark
 Lori Van Handel
 Rosamond Vaule
 Ed and Linda Vitone
 Roberta Hope Waller
 Eric & Sarah Ward
 Karen Warren
 Gregory Watson
 Liz Nelson Weaver & David Weaver
 Sarah Webb
 Linda Weber
 Jasmine Weber-Pierson
 Nancy Weiss
 Samuel Welch
 Linda Welter
 Bill & Bobbi Whiting
 Dudley and Judith Williams
 Emily Wolf
 Christine Yario
 Gail & Jonathan Yeo
 Pjer Zanchi

**Volunteers with 250 or more
 Hours of Service in FY21**

Bill Allan
 Mark Baumeister
 Valerie Bourdeau
 Shelagh Brady
 Jeanette Bragger
 Barbara Brennessel
 Brad Conant
 Fred Costanza
 Susan Crimer
 David Fitzpatrick
 Bill Hobbie
 Ashley Lawton
 Jeanne Li
 Hans Luwald
 Steve McCafferty
 Kim Novino
 Tim O'Brien
 Jackie Pascucci
 Anne Patterson
 Bob Prescott
 Willa Rapp
 Sheila Vince

**Mass Audubon
 Board of Directors 2021**

Chair Beth Kressley Goldstein

Vice Chairs Christopher Klem

President David J. O'Neill

Corporate Secretary Vacant

Assistant Corporate Secretary Kristin Barr

Treasurer Robert P. Ball

Assistant Treasurers Nicole McKoon, Jan O'Neil,
 Bancroft R. Poor

Directors

Robert P. Ball
 Peter Bernard
 Tracey Bolotnick
 Thomas A. DeMarco III
 Birgitta Dickerson
 Scott Edwards
 Kathy Emrich
 Andrew Falender
 Lorna Gibson
 Elizabeth Gilmore
 Beth Kressley Goldstein
 Carol Gregory
 Brian Hicks
 Ann Hollingsworth
 Linda Jones
 Christopher Klem
 Nagesh Mahanthappa
 Kevin McLellan
 Bob Murchison
 Al Nierenberg
 Michael Pappone
 David Phelan
 Peter Rosenblum
 Anne Snyder
 Patricia Spence
 Rosamond Vaule
 Randolph Wentworth
 Henry Woolsey
 Delphine Zurkiya

Council Co-Chairs

Al Nierenberg
 Henry Woolsey

Council

Mark Adamczyk
 Peter Alpert
 Stuart Armstrong
 Dennis Arseneau
 Marygrace Barber
 Charles Barry
 Meagan Benetti
 Robert Bertin
 Jerry Bird
 Bruce Black
 Cathy Campbell
 Shawn Carey
 Elliott Carr
 Alfred D. Chandler III
 Jared Chase
 Richard Chute
 John W. Cobb
 David Cole
 Donald Cooper
 Donna Cooper
 David Corbie
 Paula Cortes
 Emily Dahl

Nick d'Arbeloff
 Ned DeLaCour
 Alexander Ellis III
 Erin Faccione
 Barbara E. Fargo
 Gail Ferreira
 Len Fishman
 Kitty Flather
 Richard T. Forman
 Thaddeus Gillespie
 John Green
 Harry Hanson
 Lynn Harvey
 Elizabeth Heide
 Terilyn Henderson
 Chris R. Heye
 Virginia S. Hibbard
 Maria Higgins
 James Hoyte
 Nora Huvelle
 Elizabeth Ives
 Richard Johnson
 Tricia Joyce
 Jared Keyes
 Erik Knutzen
 Ginger Lawrence
 Edwin F. Leach II
 Ann Lewis
 Matt Lindley
 Allegra Lowitt
 David Lubin
 Dianne Luby
 D. Russel Lyman
 Joseph Lynch
 William F. Macauley
 William Madar
 Mark Marroni
 Mary McFadden
 Carol McGarry
 James McGuinness
 Julianne Mehegan
 Stephen Miller
 Christopher Neill
 Sheila Nutt
 J. David Officer
 David O'Neil
 Jonathan Panek
 Jeffrey Peters
 Andy Platt
 Phyllis Pollack
 Helen Pounds
 George Putnam III
 David Queeley
 Jeannette Reynolds
 Doug Sacra
 Judy Samelson
 Asha Santos
 Gwen Shipley

David Sibley
 Nancy Soulette
 Lee Spelke
 Jim Sperling
 Rajini Srikanth
 Lisa Standley
 Brooke Stevens
 William Stevenson
 Thilina Surasinghe
 Craig Tateronis
 Alexander Thorndike
 Eric Ward
 Julia Yoshida
 John Young
 Eric Zimmerman

Honorary Directors

Robert Baron
 Cathy Campbell
 Alfred Chandler III
 Jared Chase
 Richard Chute
 Franz Colloredo-
 Mansfeld
 Donald Cooper
 Paula Cortes
 Nick d'Arbeloff
 Eugene Doggett
 Nina Doggett
 Barbara E. Fargo
 Thomas French
 John Fuller
 John Green
 Terilyn Henderson
 Nora Huvelle
 Shirley Muirhead Jenkins
 Erik Knutzen
 Ginger Lawrence
 Henry Lee
 James Levitt
 Ellen Lovejoy
 Merloyd Ludington
 William Madar
 Deborah Moses
 J. David Officer
 Jonathan Panek
 Jeffrey Peters
 Helen Pounds
 George Putnam III
 John Riehl
 James Saalfeld
 Judy Samelson
 Lee Spelke
 Jim Sperling
 David Straus
 Jeffrey Swope
 Emily Wade
 Simon Walker
 David Walsh
 Thomas Warren
 Nancy Weiss
 Dudley Willis
 Alan Wilson

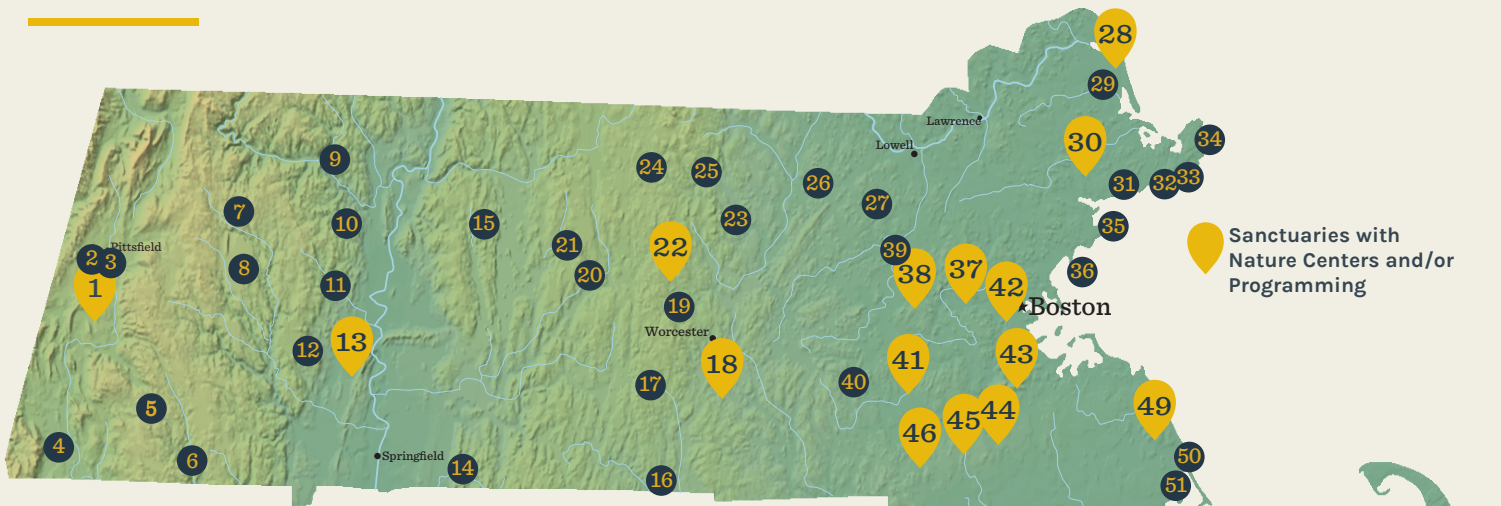
*The list reflects our
 Governance members as of
 June 30, 2021. For the most
 updated list, please visit
massaudubon.org/governance.*



Mixed Sources
 Product group from well-managed
 forests and other controlled sources
www.fsc.org Cert no. SW-COC-002679
 © 1996 Forest Stewardship Council



Mass Audubon Wildlife Sanctuaries, Nature Centers, & Museums



- West**
- 1. Pleasant Valley, Lenox
 - 2. Tracy Brook, Richmond
 - 3. Canoe Meadows, Pittsfield
 - 4. Lime Kiln Farm, Sheffield
 - 5. Old Baldy, Otis
 - 6. Richardson Brook, Tolland
 - 7. West Mountain, Plainfield
 - 8. Road's End, Worthington
 - 9. High Ledges, Shelburne
 - 10. Conway Hills, Conway
 - 11. Graves Farm, Williamsburg & Whately
 - 12. Lynes Woods, Westhampton
 - 13. **Arcadia, Easthampton & Northampton**
 - 14. Laughing Brook, Hampden
 - 15. Poor Farm Hill, New Salem

- Central**
- 16. Pierpont Meadow, Dudley
 - 17. Burncoat Pond, Spencer
 - 18. **Broad Meadow Brook, Worcester**
 - 19. Eagle Lake, Holden
 - 20. Cook's Canyon, Barre
 - 21. Rutland Brook, Petersham
 - 22. **Wachusett Meadow, Princeton**
 - 23. Lincoln Woods, Leominster
 - 24. Lake Wampanoag, Gardner
 - 25. Flat Rock, Fitchburg
 - 26. Rocky Hill, Groton
 - 27. Nashoba Brook, Westford

- North Shore**
- 28. **Joppa Flats, Newburyport**
 - 29. Rough Meadows, Rowley
 - 30. **Ipswich River, Topsfield**
 - 31. Endicott, Wenham
 - 32. Kettle Island, Manchester-by-the-Sea
 - 33. Eastern Point, Gloucester
 - 34. Straitsmouth Island, Rockport
 - 35. Marblehead Neck, Marblehead
 - 36. Nahant Thicket, Nahant

- Metro West**
- 37. **Habitat, Belmont**
 - 38. **Drumlin Farm, Lincoln**
 - 39. Brewster's Woods, Concord
 - 40. Waseeka, Hopkinton
 - 41. **Broadmoor, Natick**

- Boston**
- 42. **Boston Nature Center, Mattapan**

- Metro South**
- 43. **Blue Hills Trailside Museum, Milton**
 - 44. **Museum of American Bird Art, Canton**
 - 45. **Moose Hill, Sharon**
 - 46. **Stony Brook, Norfolk**

- South East**
- 47. Attleboro Springs, Attleboro
 - 48. **Oak Knoll, Attleboro**
 - 49. **North River, Marshfield**
 - 50. Daniel Webster, Marshfield
 - 51. North Hill Marsh, Duxbury
 - 52. **Tidmarsh, Plymouth**
 - 53. **Allens Pond, Dartmouth & Westport**
 - 54. Great Neck, Wareham

- Cape Cod**
- 55. Ashumet Holly, Falmouth
 - 56. Sampsons Island, Barnstable
 - 57. Skunknett River, Barnstable
 - 58. Barnstable Great Marsh, Barnstable
 - 59. **Long Pasture, Barnstable**
 - 60. **Wellfleet Bay, Wellfleet**

- Islands**
- 61. **Felix Neck, Edgartown**
 - 62. Lost Farm, Nantucket
 - 63. Sesachacha Heathlands, Nantucket